

Product Data Sheet

Bumper Mount Antenna

LTE

Bumper Mount Antenna

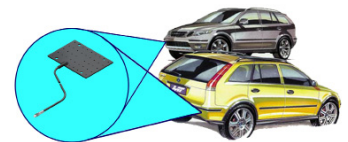


BMP1-7-27-5F

- Covert application
- Robust
- Flexible construction

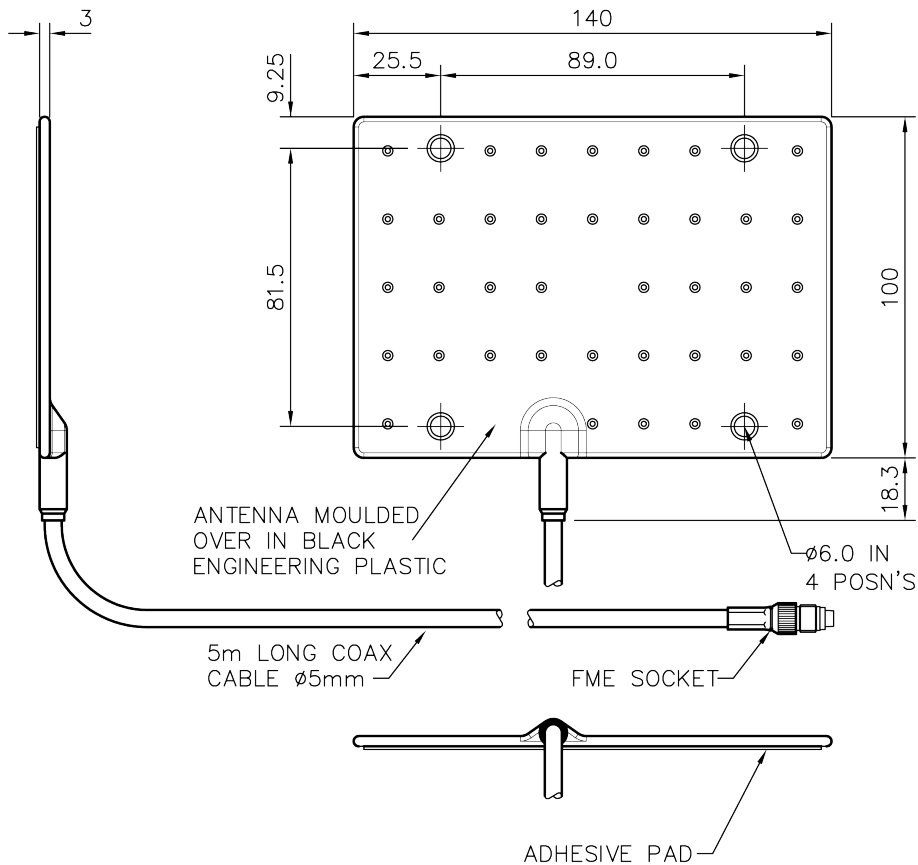
The Panorama Bumper Mount Antenna is designed for covert operations and other applications which require a vehicle antenna that is effectively invisible.

Mounted in the vehicle's bumper, installation requires no drilling and is invisible from the outside of the car.

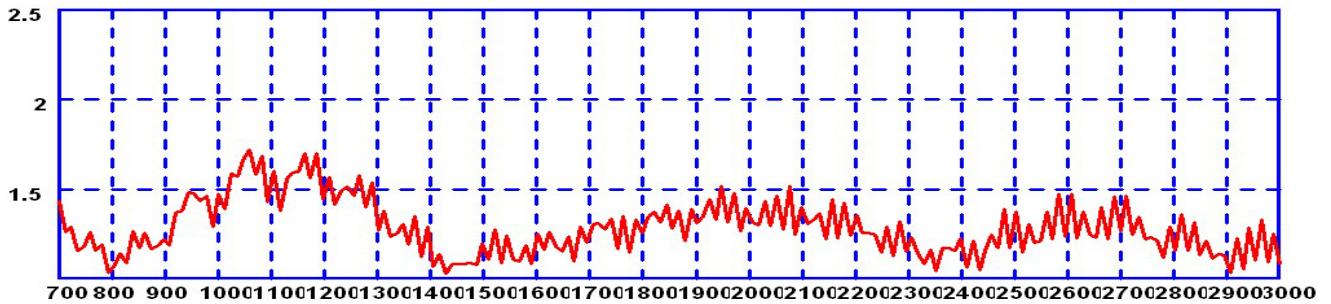


Antenna positioning

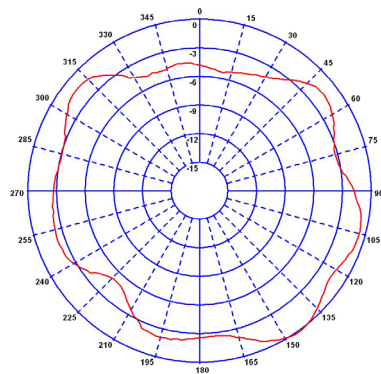
Technical Drawing



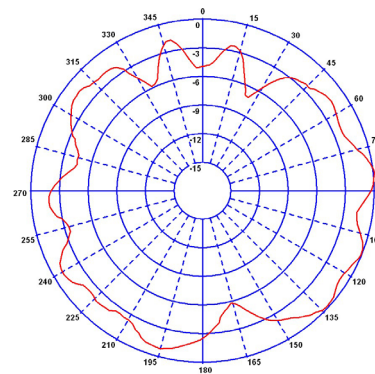
Typical VSWR



H-Plane (900MHz)



H-Plane (1800MHz)



Part No.		BMP1-7-27-5F
Electrical Data		
Frequency Range (MHz)	700 - 2700	
Gain: Isotropic	2dBi	
Compared to ¼ wave	0dB	
Bandwidth @ 1.5:1 VSWR	10%	
Polarisation	Vertical	
Pattern	Omni-directional	
Impedance	50Ω	
Max Input Power (W)	25	
Mechanical Data		
Dimensions (mm)	Length	140
	Width	100
	Thickness	4 (including adhesive pad)
Operating Temp (°C)	-40° / +80°C	
Material	Engineering plastic	
Colour	Black	
Mounting Data		
Fixing	Adhesive pad & 4 × fixing moles	
Cable Data		
Type	CS29	
Thickness (mm)	5	
Length (m)	5	
Termination	FME Socket	

Panorama Antennas Ltd
Frogmore, London, SW18 1HF, United Kingdom

T: +44 (0)20 8877 4444
F: +44 (0)20 8877 4477

E: sales@panorama-antennas.com
www.panorama-antennas.com

PANORAMA  ANTENNAS