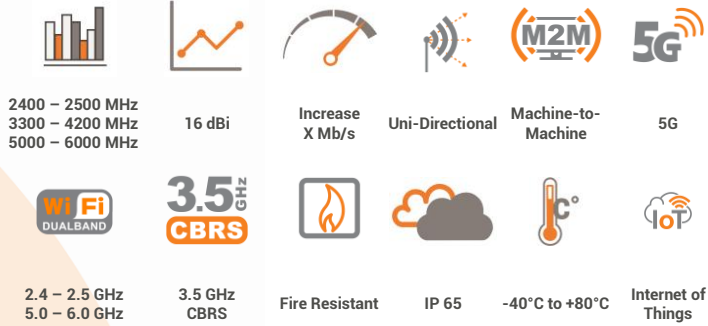


## ANTENNAS | WLAN-60 SERIES

# UNI-DIRECTIONAL, DUAL-BAND WI-FI & 5G ANTENNA

2400 – 2500 MHz, 3300 – 4200 MHz & 5000 – 6000 MHz, 16 dBi



APPLICATION AREAS

- Dual-band 2.4 GHz and 5 GHz Wi-Fi antenna
- Directional antenna with high gain
- Compliant with IEEE 802.11b/g/n/ac and 802.11ax wireless standards
- Covers the 3.5 GHz CBRS band for future 5G applications
- Vandal and water-resistant enclosure (IP 65)

## Product Overview

The WLAN-60 antenna is a dual-band Wi-Fi & 5G antenna, developed by Poynting Antennas. The WLAN-60 antenna is a linear, high-gain, dual-band antenna in one enclosure. The antenna can connect to any Wi-Fi access point, whether it is older Wi-Fi technology or new dual-band Wi-Fi technology. The antennas can therefore be used to resolve channel saturation and provide the ultimate in Wi-Fi performance and flexibility. This means that the antenna can be used for point-to-point links where there is an abundance of RF noise and cluttered environments.

The antenna operates in the two Wi-Fi frequency bands (2.4 GHz and 5 GHz), offering excellent utilization of the radio spectrum. The antenna has a maximum gain of 12 dBi in the 2.4GHz band and 16dBi in the 5GHz band, which offers the best performance with reliable connections. The antenna also covers the 3.5 GHz CBRS band, which will be used for future 5G technologies with a peak gain of 10 dBi. The housing is made of ABS, which is a high-impact resistant plastic and is also resistant to acids and other chemicals that may occur in industrial plants. The antenna can be opened on the side where an SMA female connector is placed. You can then feed the cable through the bypass gland, which means you do not have to join the antenna cable to extension cables. This eliminates connector losses and the need for taping and waterproofing the connectors for an outdoor installation.

## Features

- Dual-band Wi-Fi antenna for 2.4 GHz and 5 GHz
- High gain directional antenna
- Covers 3.5 GHz CBRS band for future 5G applications
- Robust and weather resistant
- Lightweight design and easy installation

## Application Areas

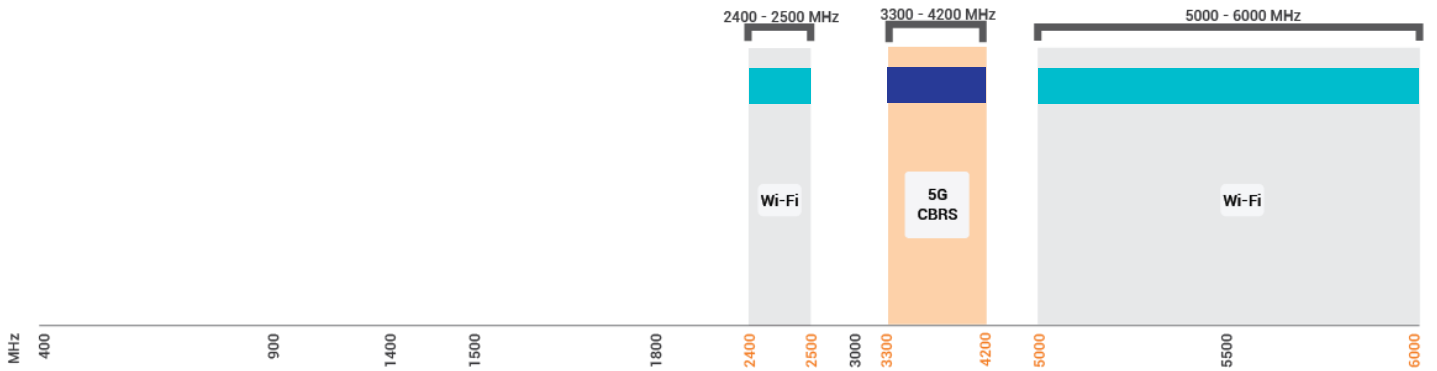
- Small business
- Building sites and open cast mines
- Production facilities and factories
- M2M and IoT applications
- Areas with large amounts of machinery (cluttered environments)



## WLAN-60


**Frequency Bands**

The WLAN-60 is a directional antenna that works from | 2400 – 2500 MHz | 3300 – 4200 MHz | and | 5000 – 6000 MHz |



Indicates the 5G bands on which WLAN-60 works       Indicates the WI-FI bands on which WLAN-60 works

**Antenna Overview**

	
Ports	1
SISO / MIMO	SISO
Frequency Bands	2400 – 2500 MHz 3300 – 4200 MHz 5000 – 6000 MHz
Polarisation	Linear Vertical
Peak Gain	16 dBi
Coax Cable Type	N/A
Coax Cable Length	N/A
Connector Type	SMA (F)

*\*The connector is factory mounted to the antenna*

### Electrical Specifications

<b>Frequency Bands:</b>	2400 – 2500 MHz 3300 – 4200 MHz 5000 – 6000 MHz
<b>Gain (Max):</b>	12 dBi @ 2400 – 2500 MHz 10 dBi @ 3300 – 4200 MHz 16 dBi @ 5000 – 6000 MHz
<b>VSWR:</b>	< 2.5:1
<b>Feed Power Handling:</b>	10 W
<b>Input Impedance:</b>	50 Ohm (nominal)
<b>Polarisation:</b>	Linear Vertical
<b>Coax Cable Loss:</b>	N/A
<b>DC Short:</b>	Yes

### Product Box Contents

<b>Antenna:</b>	A-WLAN-0060-V1
<b>Mounting Bracket:</b>	Cast aluminium swivel bracket

### Ordering Information

<b>Commercial Name:</b>	WLAN-60
<b>Order Product Code:</b>	A-WLAN-0060-V1
<b>EAN Number:</b>	6009710923986

### Mechanical Specifications

<b>Product Dimensions:</b>	240 mm x 240 mm x 60 mm
<b>Packaged Dimensions:</b>	260 mm x 280 mm x 80 mm
<b>Weight:</b>	0.76 kg
<b>Packaged Weight:</b>	1.334 kg
<b>Radome Material:</b>	ABS (Halogen Free)
<b>Radome Colour:</b>	Pantone – Cool Gray (1C)
<b>Mounting Type:</b>	Wall and Pole Mount

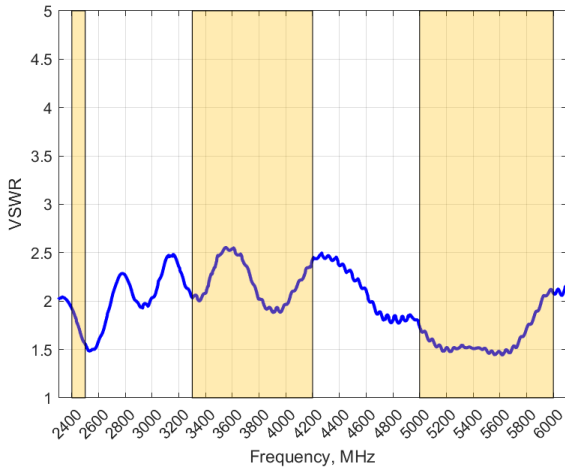
### Environmental Specifications, Certification & Approvals

<b>Antenna Wind Survival:</b>	≤160 km/h
<b>Temperature Range (Operating):</b>	-40°C to +80°C
<b>Environmental Conditions:</b>	Outdoor/Indoor
<b>Ingress Protection:</b>	IP 65
<b>Salt Spray:</b>	MIL-STD 810G/ASTM B117
<b>Operating Relative Humidity:</b>	Up to 98%
<b>Storage Humidity:</b>	5% to 95% - non-condensing
<b>Storage Temperature:</b>	-40°C to +80°C
<b>Enclosure Flammability Rating:</b>	UL 94-HB
<b>Impact Resistance:</b>	IK 08
<b>Product Safety &amp; Environmental:</b>	Complies with CE and RoHS standards

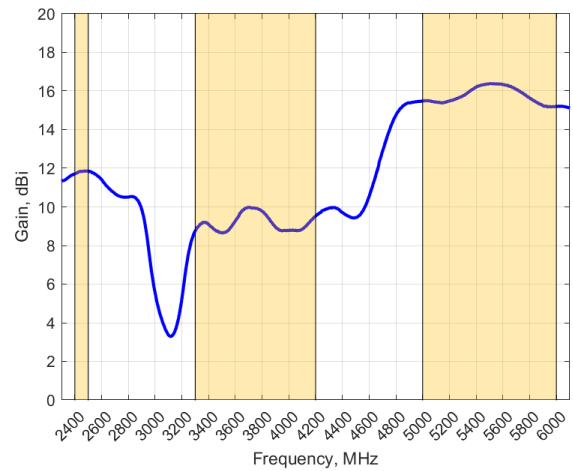


Antenna Performance Plots

VSWR



GAIN (EXCLUDING CABLE LOSS)



**Voltage Standing Wave Ratio (VSWR)\***

VSWR is a measure of how efficiently radio-frequency power is transmitted from a power source, through a transmission line, into a load. In an ideal system, 100% of the energy is transmitted which corresponds to a VSWR of 1:1.

The WLAN-60 delivers superior performance with a VSWR of <2.5:1.

**Gain\* in dBi**

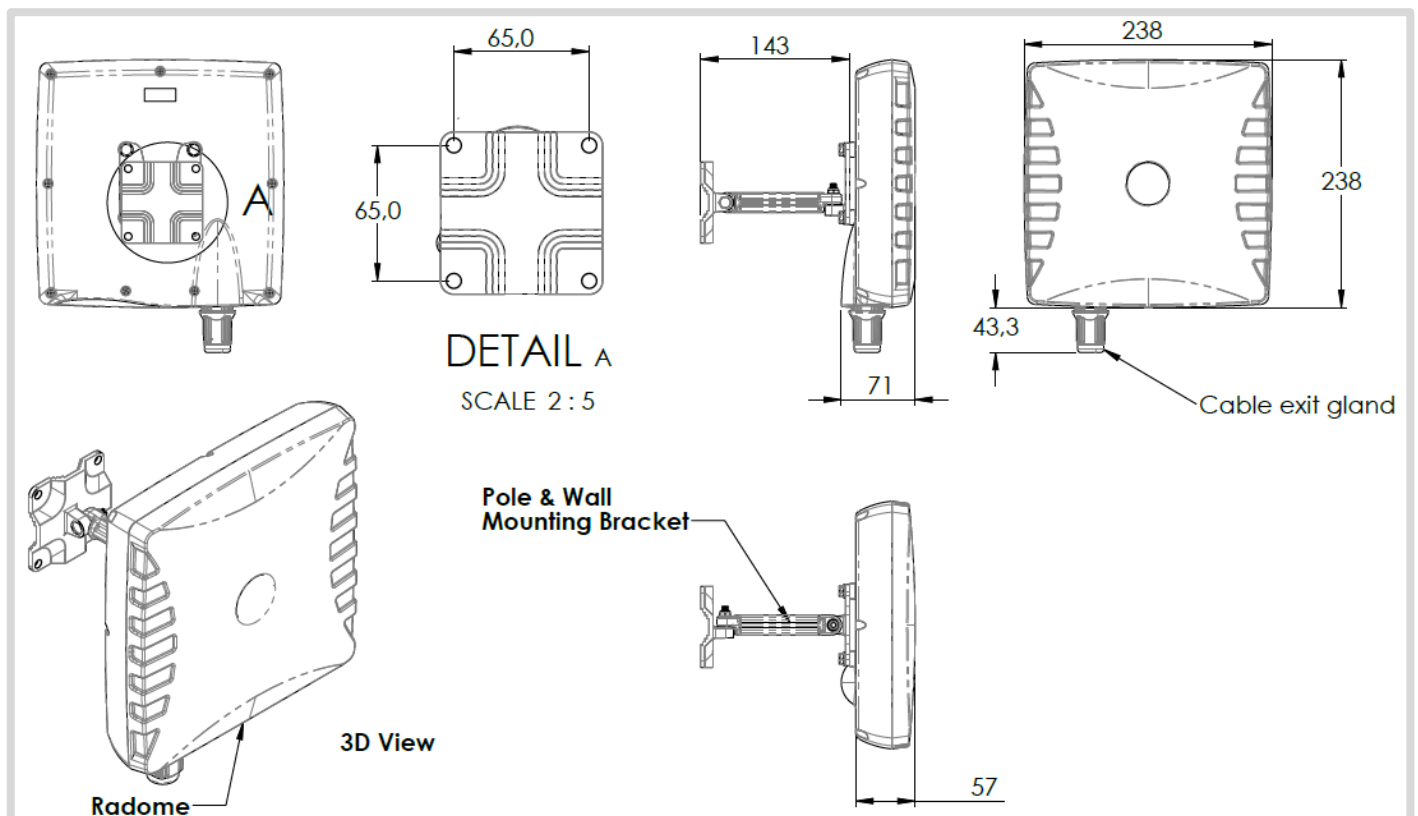
16 dBi is the peak gain across all bands from 2400 – 2500 MHz, 3300 – 4200 MHz and 5000 – 6000 MHz

Gain @ 2400 – 2500 MHz:	12 dBi
Gain @ 3300 – 4200 MHz:	10 dBi
Gain @ 5000 – 6000 MHz:	16 dBi

\*VSWR measured with a 2m low loss cable.

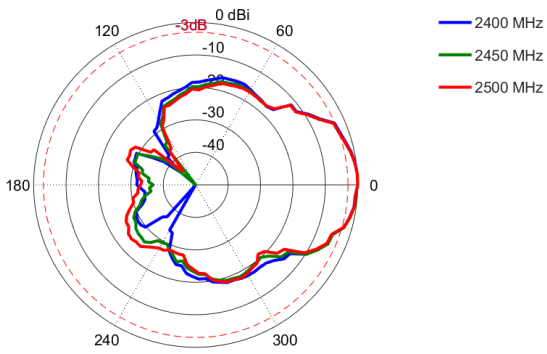
\*Antenna gain measured with polarisation aligned standard antenna

Technical Drawings

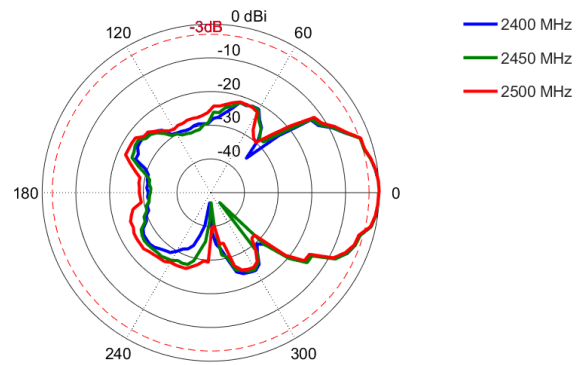


**Radiation Patterns**

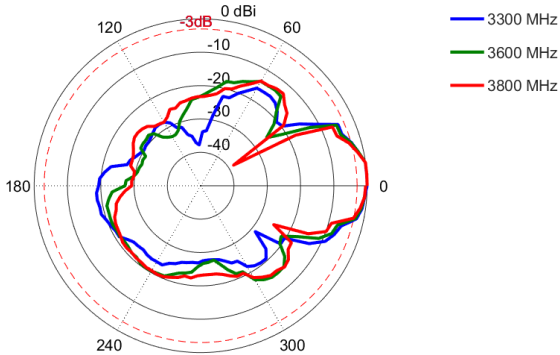
**Azimuth: 2400 - 2500 MHz**



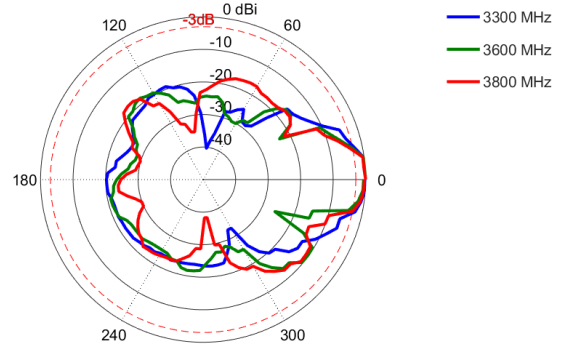
**Elevation: 2400 - 2500 MHz**



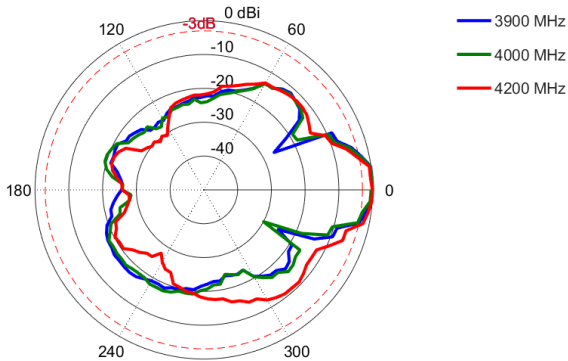
**Azimuth: 3300 - 3800 MHz**



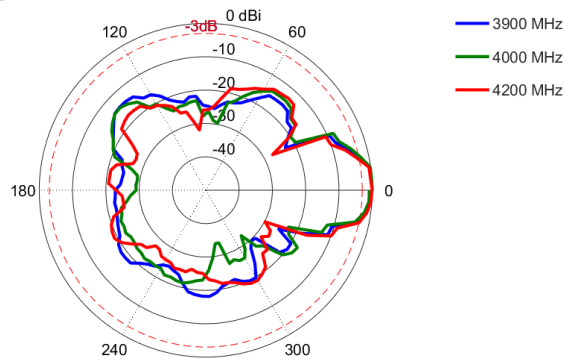
**Elevation: 3300 - 3800 MHz**



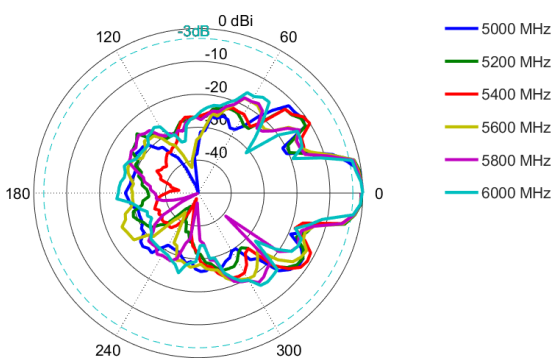
**Azimuth: 3900 - 4200 MHz**



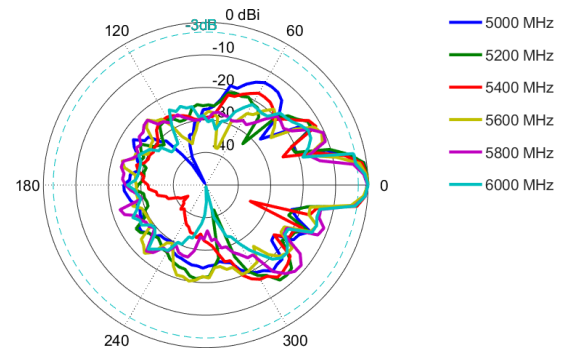
**Elevation: 3900 - 4200 MHz**



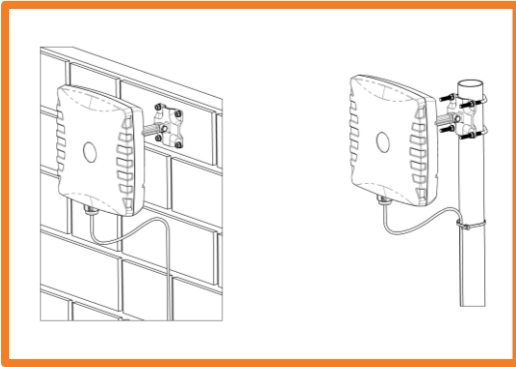
**Azimuth: 5000 - 6000 MHz**



**Elevation: 5000 - 6000 MHz**

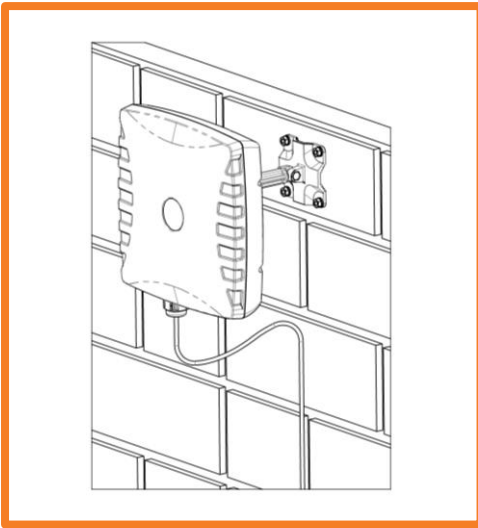


**Mounting Options**



**Pole Mount**

Pole/Wall mounting bracket (included)



**Wall Mount**

Pole/Wall mounting bracket (included)

---

## Additional Accessories

Extension Cables: Up to 15m HDF 195

Various connectors available

Installation poles and brackets available

See accessories technical specifications on [www.poynting.tech](http://www.poynting.tech)

---

## CONTACT POYNTING

### Poynting Antennas (Pty) Ltd - Head Office

Unit 4, N1 Industrial Park,  
Landmarks Avenue,  
Samrand, 0157, South Africa

**Phone:** +27 (0) 12 657 0050

**E-mail:** [info@poynting.tech](mailto:info@poynting.tech)

**International Email:** [sales-global@poynting.tech](mailto:sales-global@poynting.tech)

### Poynting Europe

Regus Business Center Neue Messe Riem  
Kronstadter Straße 4  
81677 München  
Germany

**Phone:** +49 89 7453 9002

**E-mail:** [sales-europe@poynting.tech](mailto:sales-europe@poynting.tech)

### Poynting USA

1804 Owen Court, Suite 104,  
Mansfield,  
TX 76063  
USA

**Phone:** +1 817 533-8130

**E-mail:** [sales-us@poynting.tech](mailto:sales-us@poynting.tech)